



2 0 2 3



The *driving force* for Jacob & Co. is creativity. From his earliest beginnings in jewelry and watches, Jacob Arabo has been designing beautiful and innovative products.



THE PARTNERSHIP



Accurate Lock and Hardware *fuses* old-world craftsmanship with modern technology to create architectural hardware products of uncompromising quality.



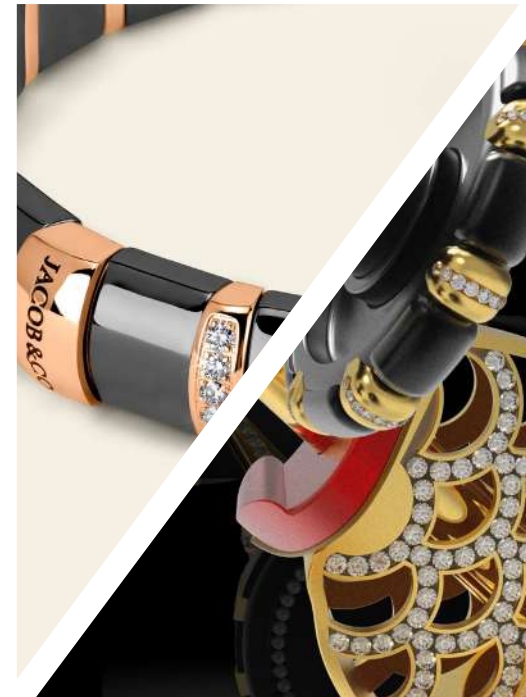
**ACCURATE LOCK &
HARDWARE**



ASTRONOMIA



AIR SPACE



FINE JEWELRY



JEAN BUGATTI



ACCURATE LOCK & HARDWARE

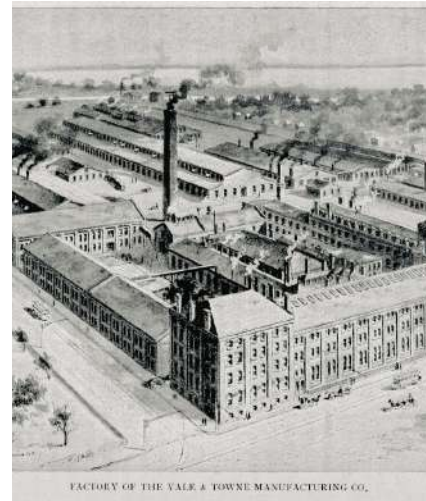
For half a century, Accurate Lock & Hardware has been dedicated to providing the finest American-Made locks and hardware solutions. Our team of experts have created an extensive range of products for the entire door.

From concept to manufacturing, all Accurate products are proudly made **entirely in the USA**.



1960

Began operating as a subcontractor of Yale & Towne making specialty locks.



1972

Accurate Lock & Hardware was founded as an independent lock manufacturer.

1978

Accurate was commissioned to make custom high security institutional locks for Attica prison in response to the 1971 riots



1985

First Narrow Backset Mortise Lock developed (8500 Series)

1985

Iraq International Airport



1986

Diet Building in Tokyo, Japan

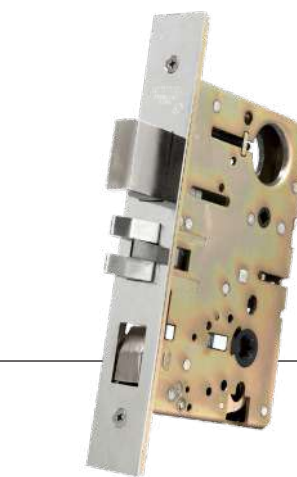


1987

IBM Q

1988

White House



1991

Development of the 9100 Series Mortise Lock – the lock of choice amongst OEM trim manufacturers

2002

2002CPDL Pocket Door Lock is introduced



2014

Reed joins Accurate as CEO

2022

Expansion Building 5





ACCURATE LOCK & HARDWARE

HISTORICAL PROJECTS

Left: South Carolina State Capitol Building **Top:** Ohio State Capitol Building **Middle:** White House **Bottom:** Grand Central Terminal



Custom + Bespoke Projects for
Noteworthy Clients Over The Years

Steve Jobs
Bill Gates
Billy Joel
Mariah Carey
Martha Stewart
Jon Bon Jovi
Treasury Building - Washington D.C.
Waldorf Astoria - New York, NY
Union Station - Washington D.C.
House of Common - Canada
Ellis Island - New York, NY
Copley Plaza Hotel - Boston, MA
Carnegie Hall - New York, NY
Diet Building - Tokyo, Japan



IF YOU CAN DREAM IT, WE CAN MAKE IT

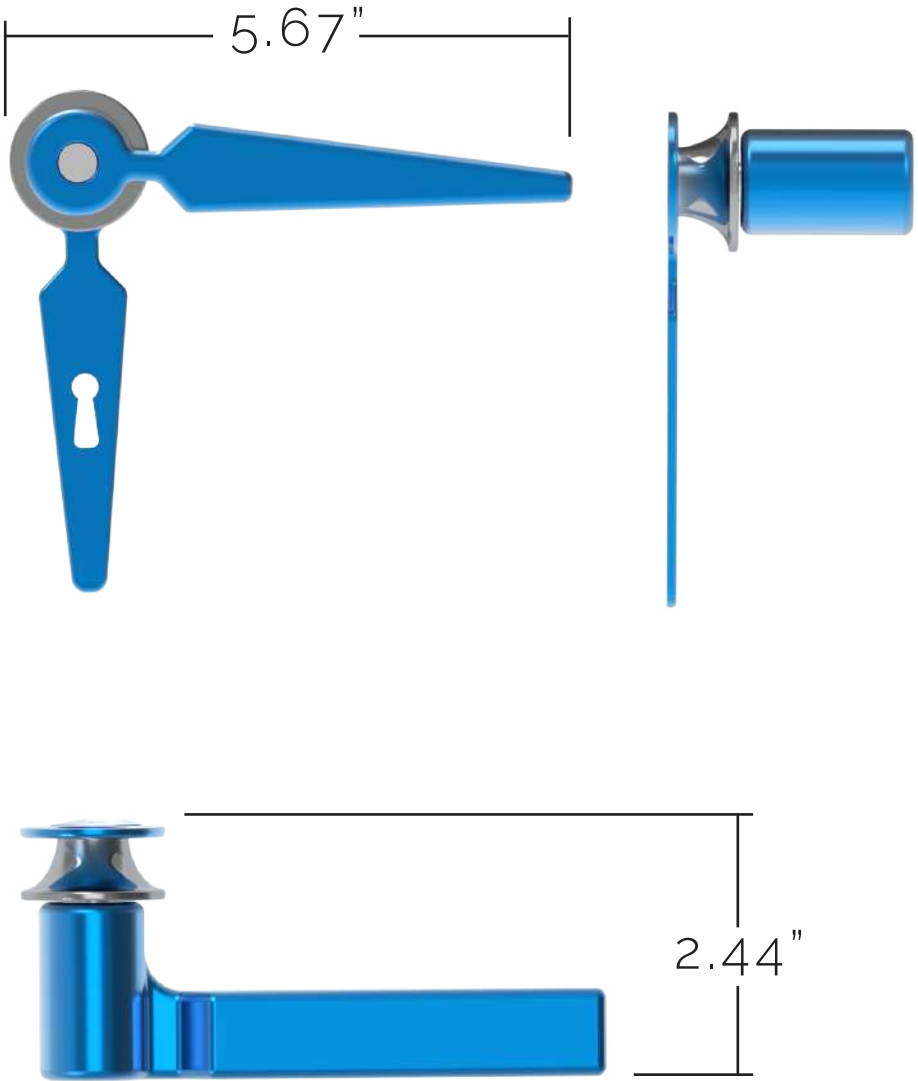
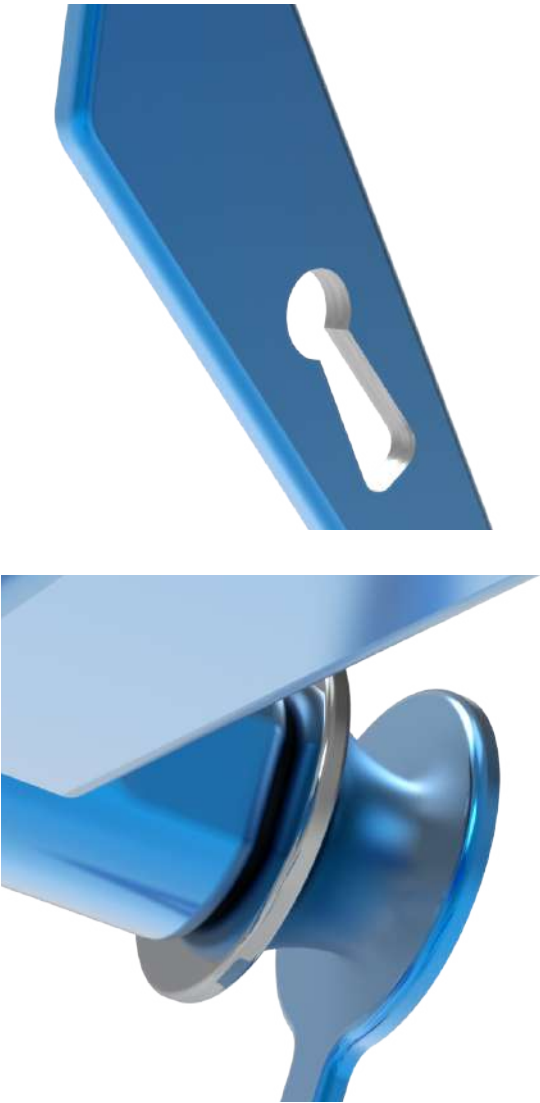
TIMELESS FINE DOOR JEWELRY...

Astronomia Collection

This hardware concept is focused on small details that make a big impact. The intricacies in the exposed gears are coupled with the desire for color and need for **transparency**.



LEVER I



LEVER I | *POLISHED BRASS*



LEVER I | *POLISHED CHROME*



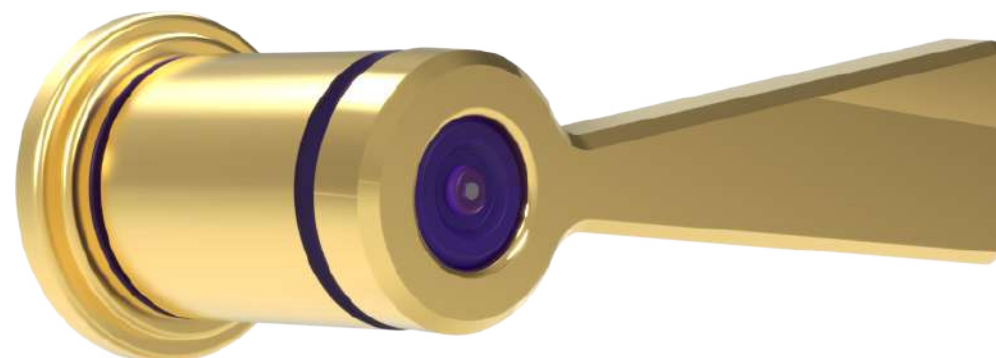
LEVER II



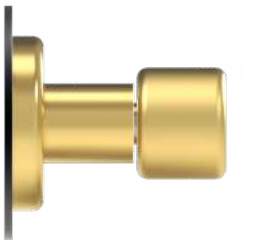
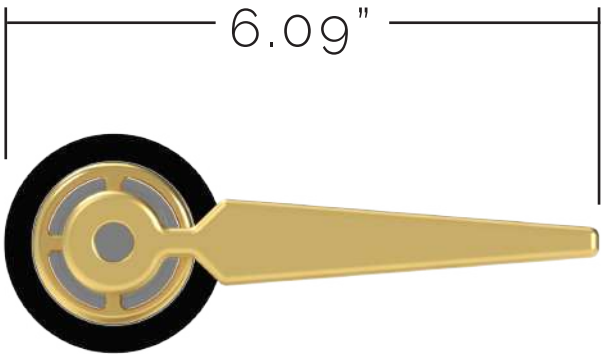
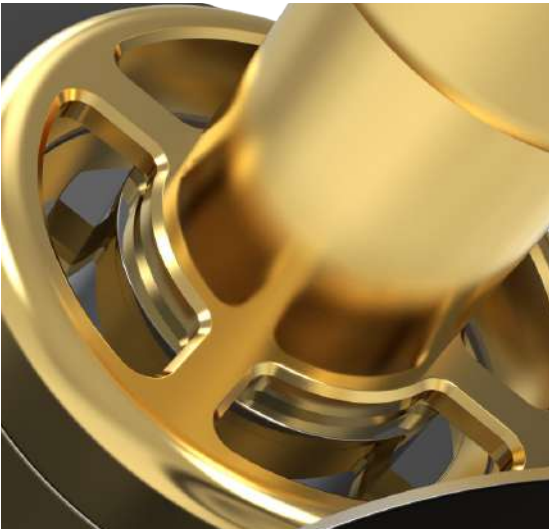
LEVER II | *MATTE BLACK*



LEVER II | *POLISHED BRASS*



LEVER III

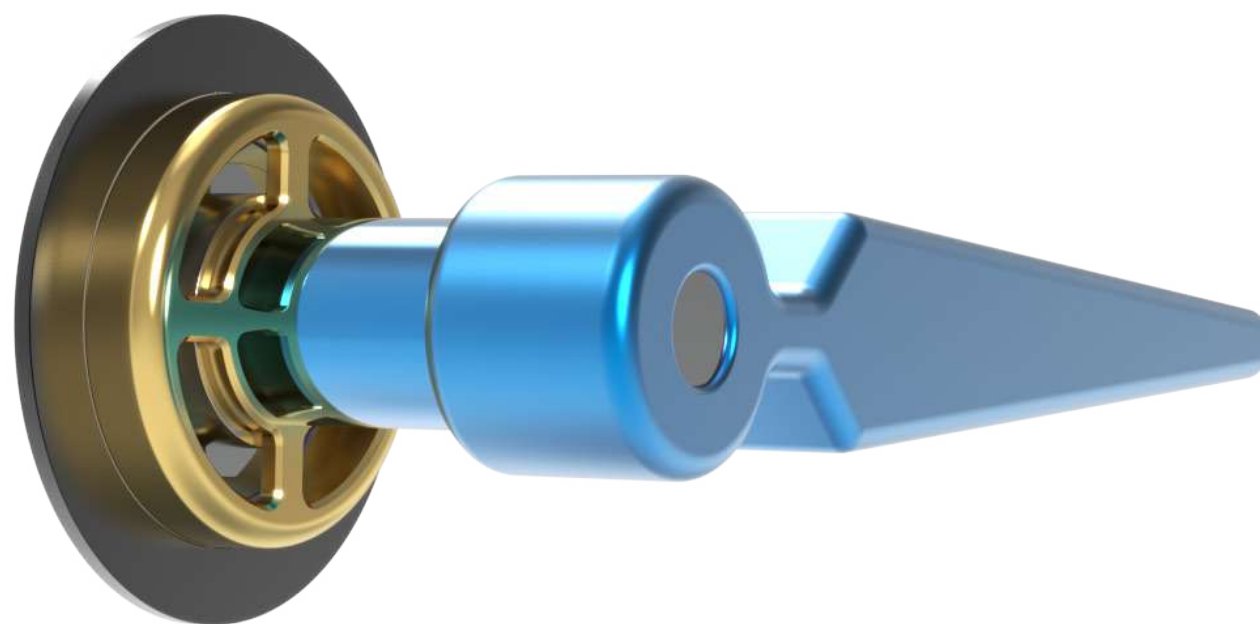


2.12"



ASTRONOMIA

LEVER III | *ANODIZED BLUE*



LEVER III | *POLISHED NICKEL*



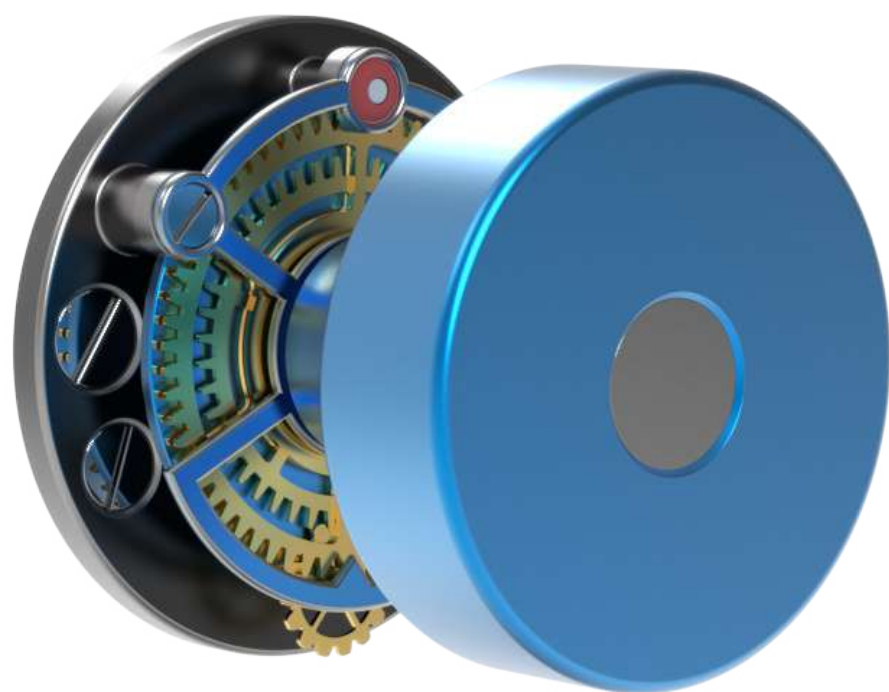
KNOB I





ASTRONOMIA

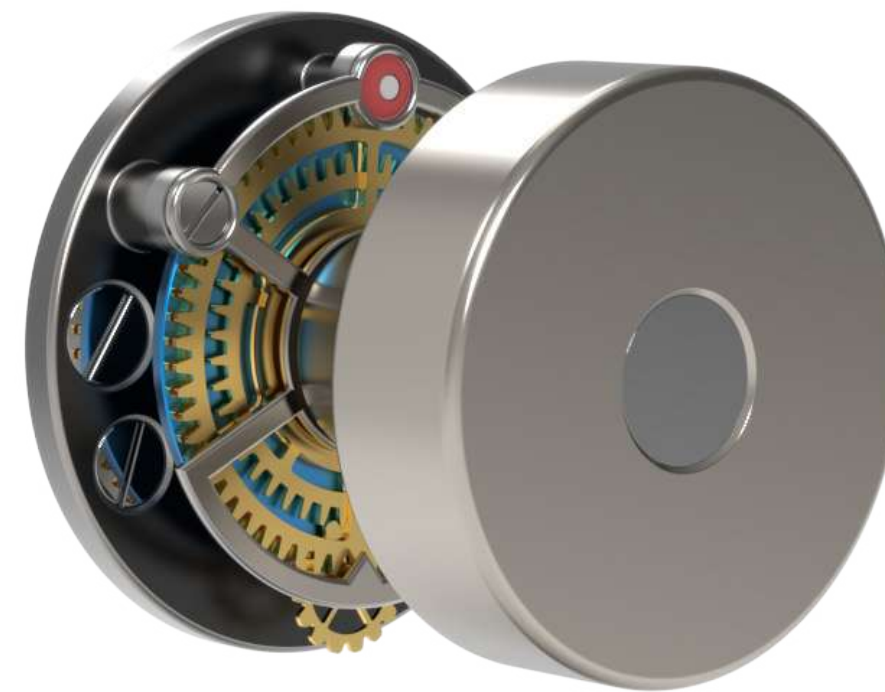
KNOB I | *ANODIZED BLUE*



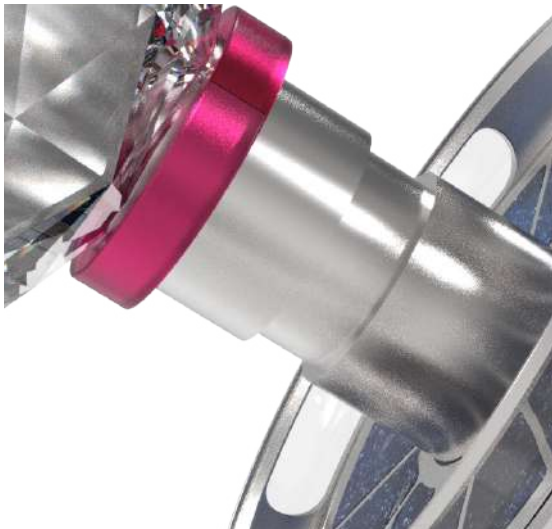
KNOB I | *POLISHED BRASS*



KNOB I | *POLISHED NICKEL*



KNOB II





ASTRONOMIA

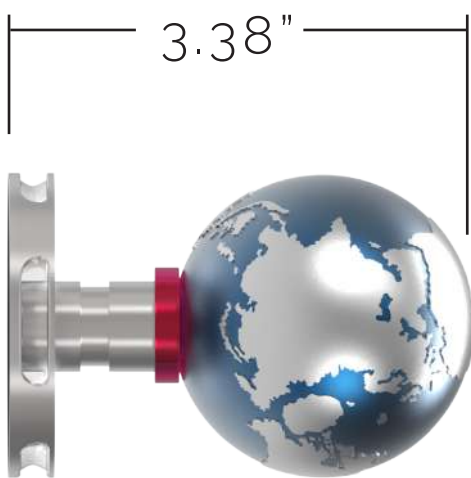
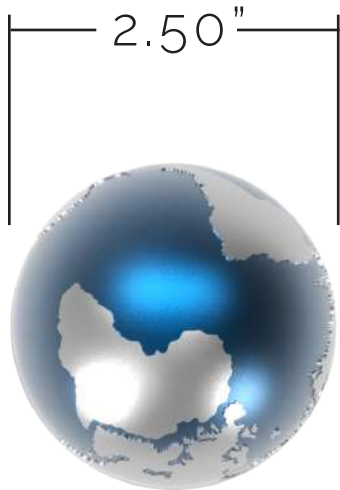
KNOB II | *ORANGE JEWEL*

KNOB II | *BLUE JEWEL*

KNOB II | *RED JEWEL*



KNOB III





ASTRONOMIA

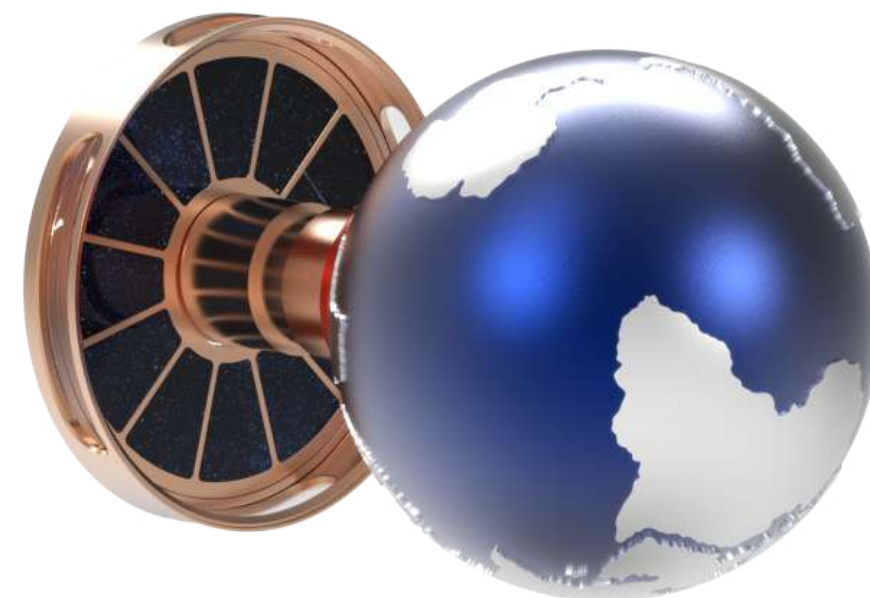
KNOB III | *MATTE BLACK +
POLISHED BRASS*



KNOB III | *ANODIZED BLUE + COPPER*



KNOB III | *ANODIZED BLUE + POLISHED
CHROME*





KNOB IV



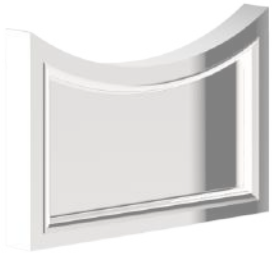
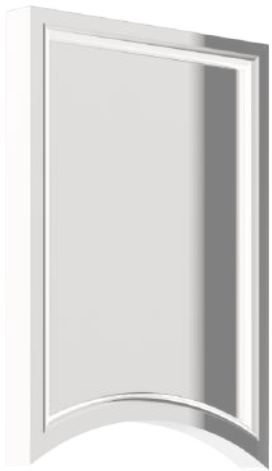
Air Space

Finding inspiration in aerospace, architecture and nature; this concept is focused on making door hardware seem **weightless**. It gives the illusion of a floating knob inspired by the inner gears and workings of a timepiece.





KNOB + ESCUTCHEON I
| ALL SHOWN IN POLISHED CHROME



ESCUTCHEON II



ESCUTCHEON III



ESCUTCHEON IV

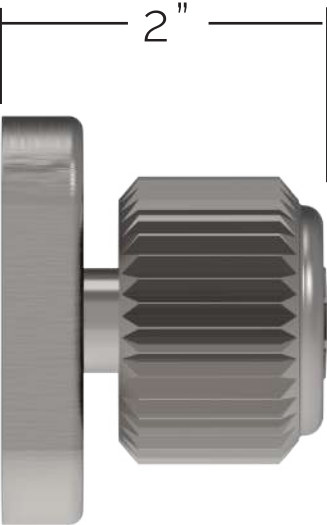
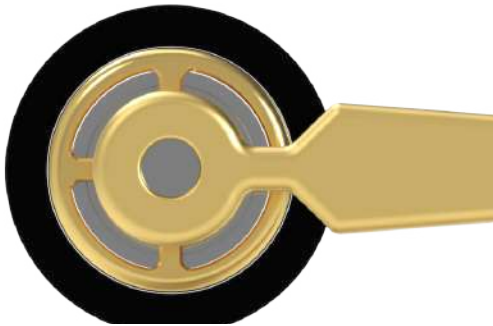
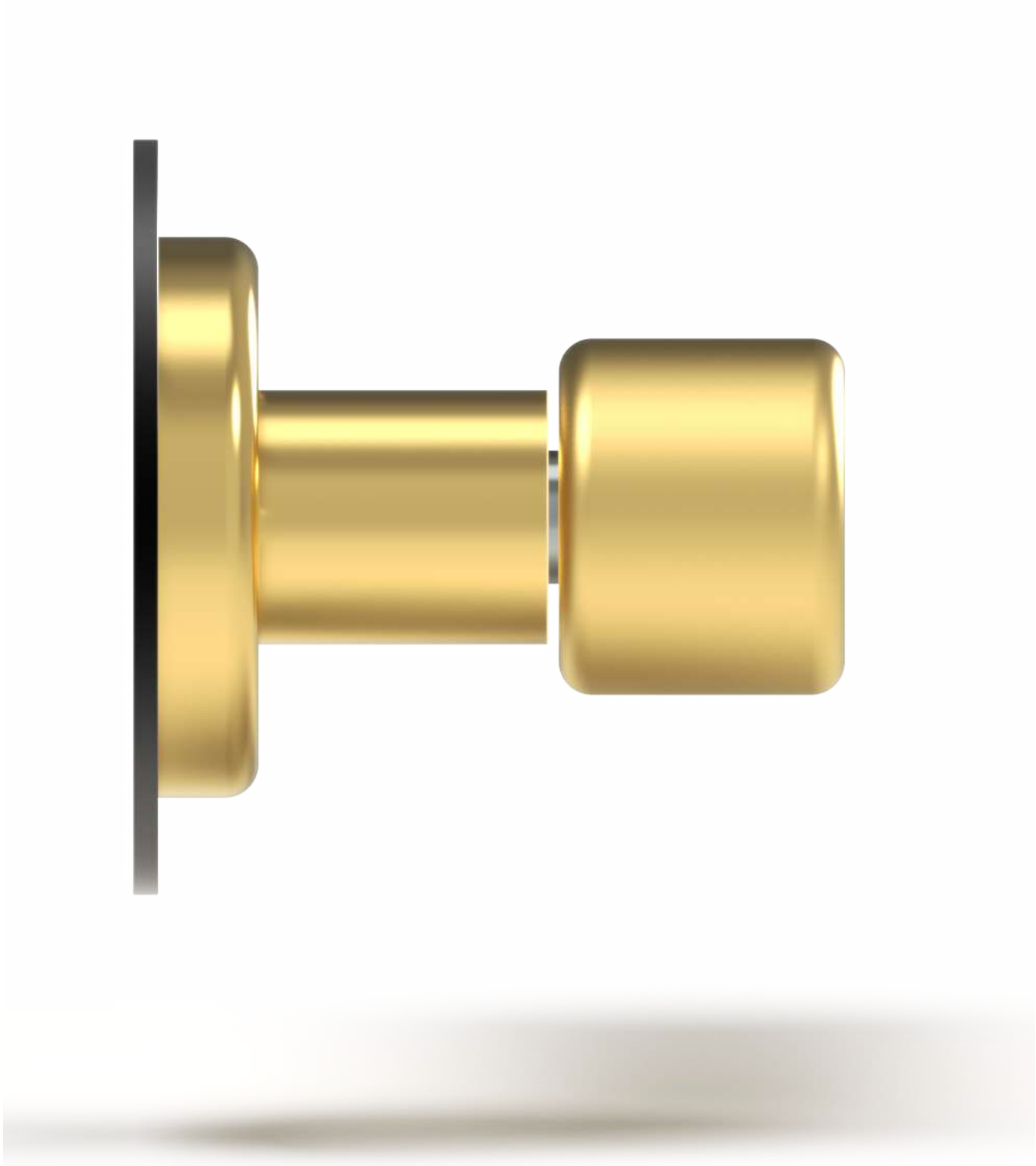


Jean Bugatti

This concept is inspired by the Jean Bugatti crown of the piece and evolves the design and shape to be a unique and beautiful knob.



KNOB I



KNOB I | *SATIN BLACK*



KNOB I | *SATIN BLACK + CRYSTAL*



KNOB I | *SATIN BRASS*



Door Jewelry Collection

Inspired by fine jewelry pieces and its precious details, this concept elevates the common knob to truly be a jewelry accessory for the door.



KNOB I



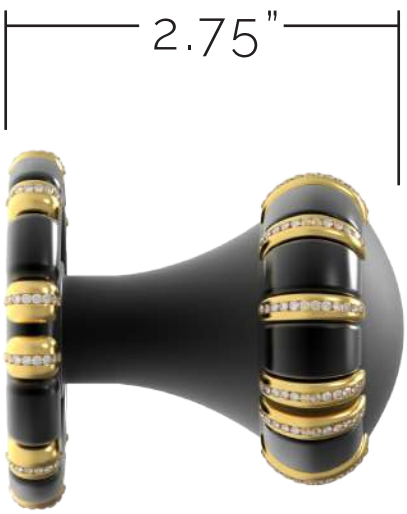
KNOB I | *MATTE BLACK + POLISHED CHROME*



KNOB I | *POLISHED BRASS + POLISHED CHROME*



KNOB II



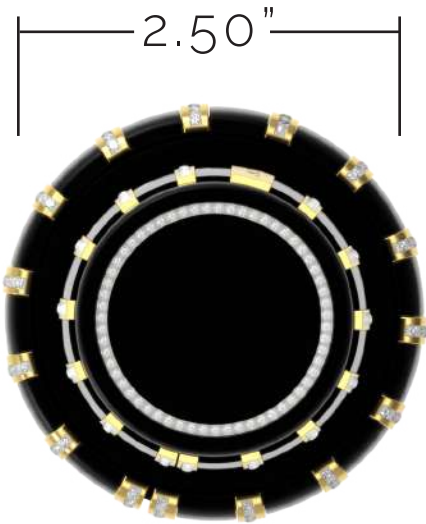
KNOB II | *MATTE BLACK + POLISHED CHROME*



KNOB II | *POLISHED BRASS + POLISHED CHROME*



KNOB III



KNOB III | MATTE BLACK +
POLISHED CHROME



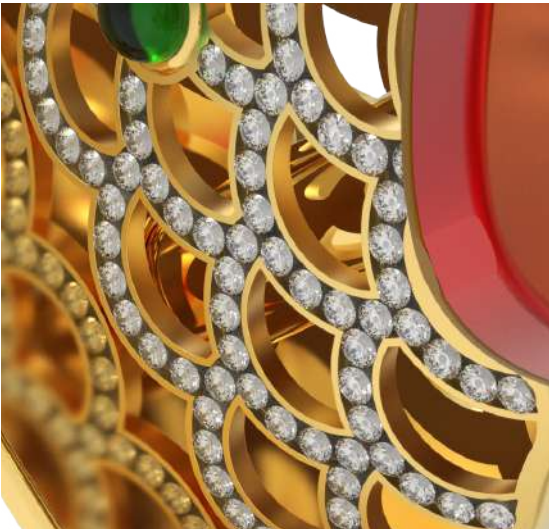
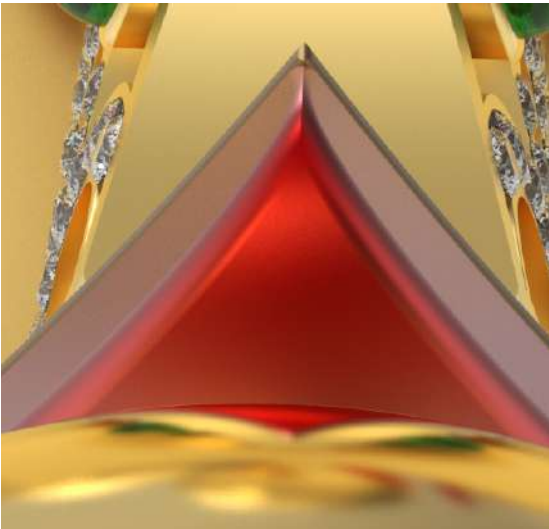
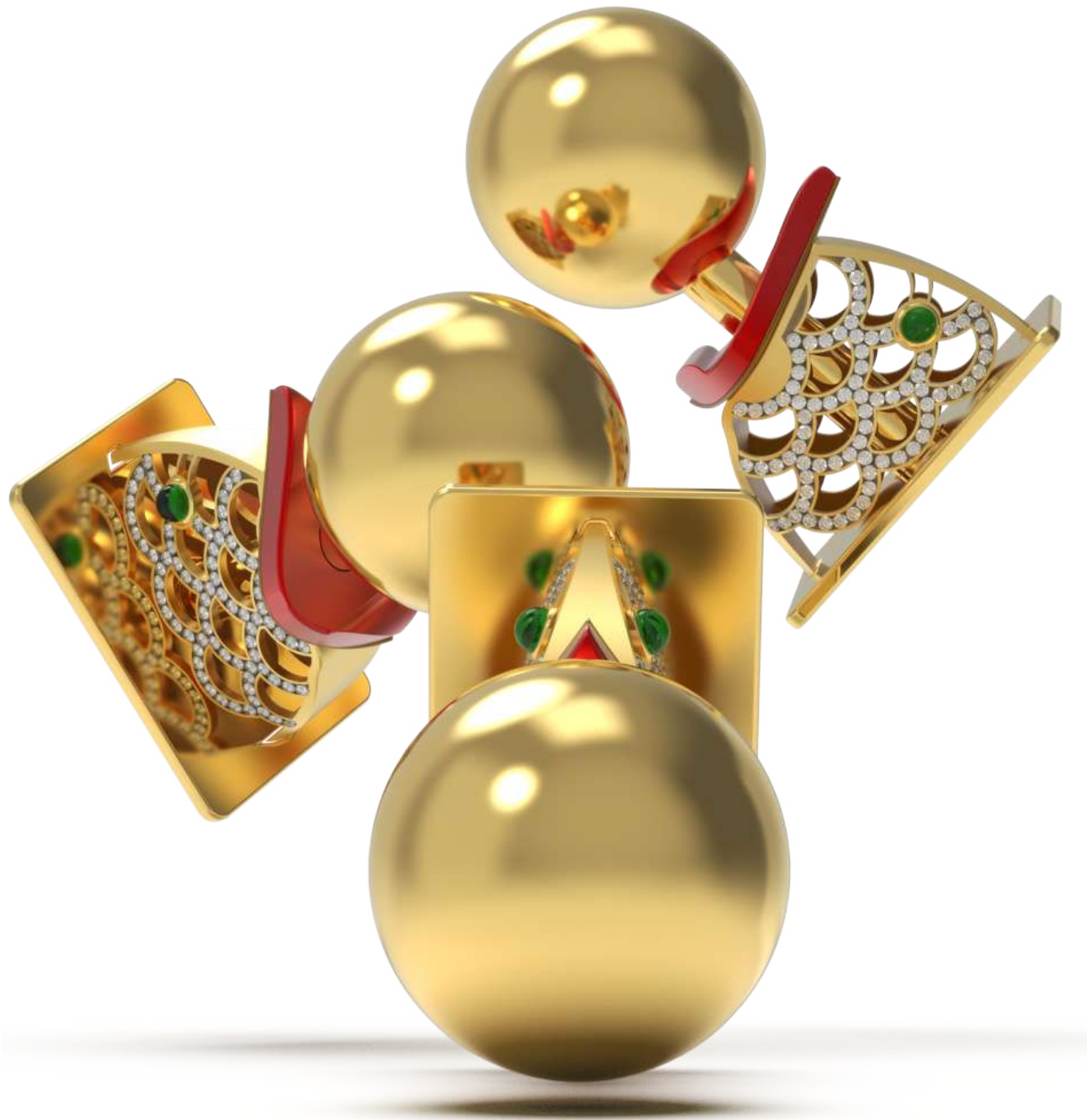
KNOB III | MATTE BLACK +
POLISHED CHROME



KNOB III | MATTE BLACK +
POLISHED CHROME



KNOB IV



2.81"



5.35"



ASTRONOMIA



LEVER 1 | DISPLAY CASE
POLISHED BRASS + MATTE BLACK

LET'S MAKE IT HAPPEN

CEO REED M. SALVATORE | REED@ACCURATEOCKANDHARWDARE.COM

DIRECTOR OF
MARKETING TARRA DELCHIARO | TARRA@ACCURATEOCKANDHARWDARE.COM